



Practical RDF Town Hall

XML Conference & Exposition 2003
07-12 December 2003

<http://www.sun.com/>



Version 1.0

We Are...

- Dan Brickley
- Dan Connolly
- Edd Dumbill
- Norman Walsh

What's a Journal

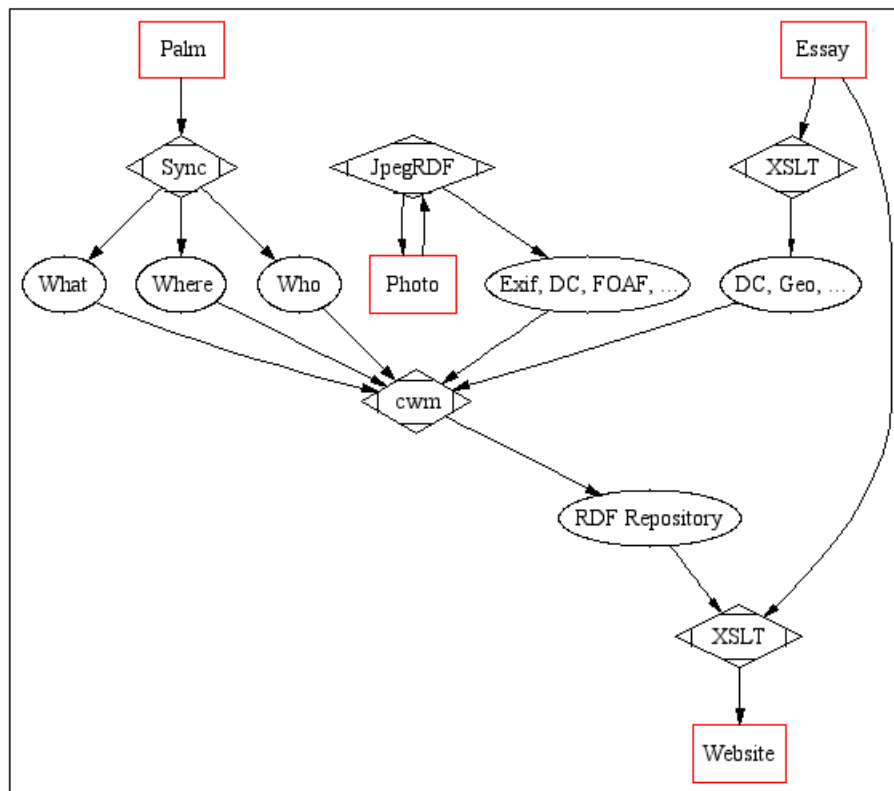
- A collection of essays. Essays have important metadata.
- Essays are about events, things, people, and places.
- Essays contain photographs that depict events, things, people, and places.
- People participate in any number of relationships. Places are related to each other geographically. Etc.
- These relationships are important and interesting (to me, at least).

Why RDF?

- Solves practical problems with off-the-shelf tools
- Aggregation is easy
- Inference is easy

Case Study

The following diagram shows how some of the pieces are pulled together for <http://norman.walsh.name/>.



Construction of <http://norman.walsh.name/>

Tools

cwm [<http://www.w3.org/2000/10/swap/doc/cwm.html>]

I use cwm (“closed world machine”) to aggregate and apply inference rules to my data.

jpegrdf [<http://nwalsh.com/java/jpegrdf>]

I use jpegrdf to store metadata about photographs *inside* the photographs.

Jena [<http://jena.sourceforge.net/>]

Jena is a Java library for accessing RDF graphis.

XSLT/RDFTwig [<http://rdftwig.sf.net/>]

I use RDFTwig, a set of extension XSLT extension functions, to make it easier to style RDF data for presentation.

Tools (Continued)

My own Palm stuff

My Palm Pilot is my “personal information appliance”. I store as much data in there as I can.